

**Sintex**

Factory Made

**DOORS**

NOW FOR ALL OPENINGS





In line with our innovating and pioneering spirit, we brought to the country PLASTIC SECTIONS from which doors were made and installed by a lot of individual fabricators. These doors found acceptance in bathrooms, toilets & kitchens all over the country but did not satisfy the consumers' demand in totality owing to variations in workmanship, quality of components and quality of service. We therefore, felt the need of doors made in our factory with components that would deliver excellent quality, durability and value to the customers.

Using state-of-the-art assembling facilities, we are now pleased to present you FACTORY MADE DOORS in 6 different types and 6 different sizes that can service practically all internal openings in homes, offices, factories, hotels, clubs, hospitals etc.

#### Key Features of SINTEX Factory Made Doors:

- Made on state-of-the-art assembling plants to exacting specifications
- Neatly packed to maintain pristine quality of doors
- Free from rusting as assembled with stainless steel screws
- Perfectly designed for stability and versatility
- Water proof, Rot proof, Weather proof & Termite proof
- Maintenance free
- Uniform quality
- Enduringly elegant
- Compatible with Sintex or other Conventional door frames
- Available in standard and custom sizes

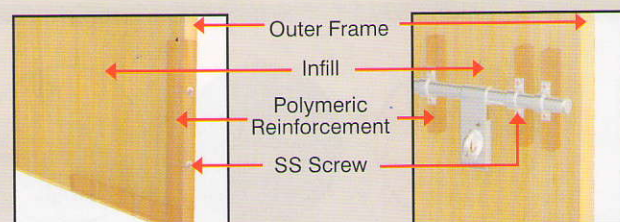


## Sintex FMD SERIES Multi Panel Doors

#### Unique Features:

- 24 mm thick door shutter with 20 mm infill
- Reinforced with excellent polymeric reinforcement to avoid weather effects
- Suitable for toilet, bathroom and kitchen door
- Options of single & multi panel door
- Available in all standard shades of SINTEX
- Available in SINTEX & RENO

### Internal Structure of the Door





## Sintex FMD SERIES Single Panel Doors

### Unique Features:

- 24 mm & 30 mm thick door shutter with 20 mm infill
- Reinforced with excellent polymeric reinforcement to avoid weather effects
- Suitable for toilet, bathroom and kitchen door
- Available in single & molded shutter frame
- Available in all standard shades of SINTEX
- Approved in: CPWD, JNNURM, BMTPC Projects



## Sintex EKAYA PREMIUM DOORS

### Unique Features:

- Single piece door in 25 mm and 35 mm thickness
- Reinforced with excellent polymeric reinforcement to avoid weather effects
- Suitable for toilet, bathroom, kitchen and internal door
- Available in all standard shades of SINTEX
- Approved in: JNNURM, Police Housing Projects, BMTPC Projects

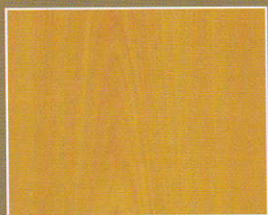


## STANDARD SHADES:

D: Gloss Finish

M: Matt Finish

The shades shown are for sake of reference only and may vary slightly from actual colours.



(D/M-01) TEAK WOOD



(D/M-05) ROSE WOOD



(M-08) REGENT OAK



(M-09) ORNATE OAK



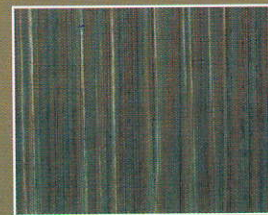
(D-13) BEECH EXOTICA



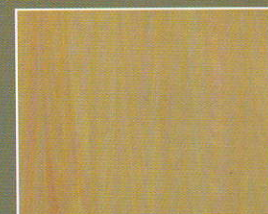
(D-15) TROPICAL TEAK



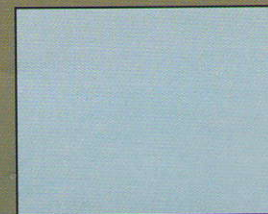
(D-18) FIGURE WOOD



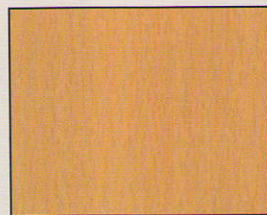
(D-19) ZEBRANO



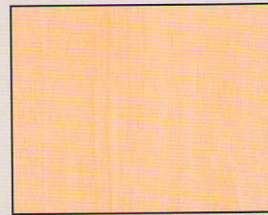
WOODEN



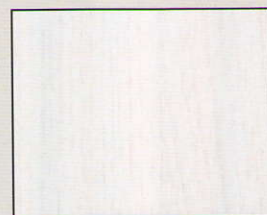
GREY



(D/M-06) THAI TEAK



(D/M-07) STEAM BEECH



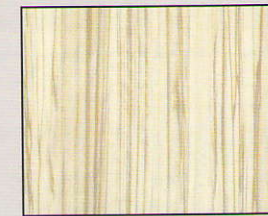
(M-10) SUB-LIME OAK



(D-11) NUT SHELL



(D-16) EBONY



(D-17) JAKARTA TEAK



(D-20) GRASS WOOD



(D-61) MARBLE



WHITE